

Valve general informations
Working conditions

This catalogue shows technical specifications and diagrams measured with mineral oil of 46 mm²/s – 46cSt viscosity at 40°C temperature.

Nominal flow rating	45 l/min.		
Max. flow	65 l		
Operating pressure (max.)	315 bar	4600 psi	
Max. back pressure	on outlet port T	20 bar	290 psi
Internal leakage A(B)→T	Δp=100 bar – 1450psi with fluid and valve at 40°C	3cm ³ /min.	0.18 in ³ /min.
Hydraulic fluid	Mineral base oil		
Fluid temperature	with NBR seals	from - 20° to 80°C	
	with FPM (VITON) seals	from - 20° to 100°C	
Viscosity	operating range	from 15 to 75 mm ² /s	from 15 to 75 cSt
	Min.	12 mm ² /s	12 cSt
	Max.	400 mm ² /s	400 cSt
Max. level of contamination	19/16 – ISO 4406		

Standard threads
REFERENCE STANDARDS

		BSP	UN-UNF	METRIC
THREAD ACCORDING TO		ISO 228/1	ISO 263	ISO 262
		BS 2779	ANSI B1.1 unified	
CAVITY ACCORDING TO	ISO	1179	11926	9974-1
	SAE		J1926	J2244
	DIN	3852-2 shape X o Y		3852-1 shape X o Y

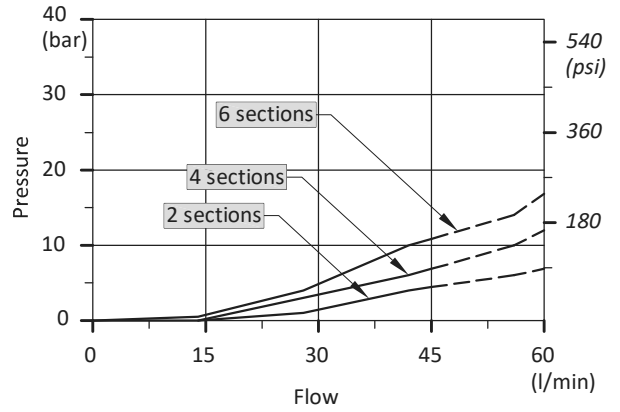
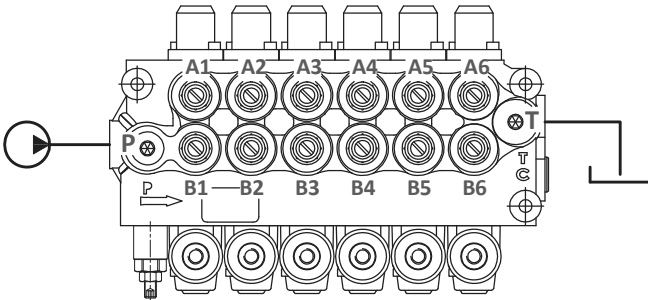
PORTS THREAD

MAIN PORTS	BSP	OPTIONAL	UN-UNF	METRIC
Inlet P and carry-over C	G 3/8	G 1/2	3/4 – 16 (SAE 8)	M18x1,5
Ports A and B	G 3/8	G 1/2	9/16 – 18 (SAE 6)	M18x1,5
Outlet T	G 3/8	G 1/2	3/4 – 16 (SAE 8)	M18x1,5
CONTROL PILOT PORTS				
Pneumatics	G 1/8		-	-
Hydraulics	G 1/4		-	-

Performance data (pressure drop vs. flow)

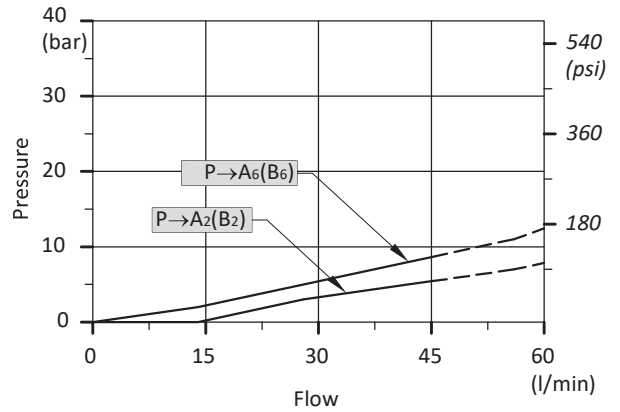
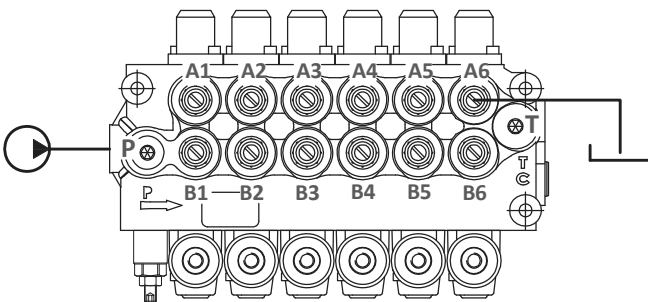
Open centre

From side inlet to side outlet.



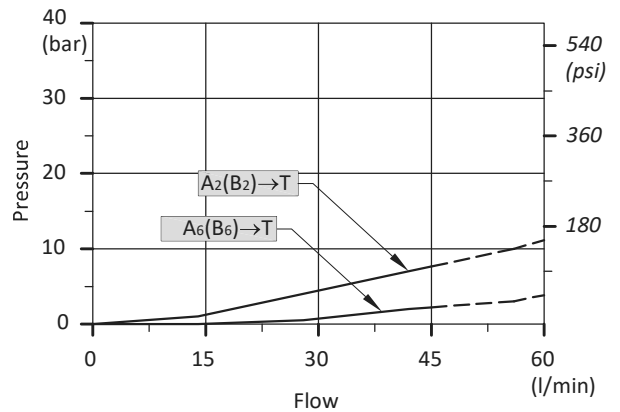
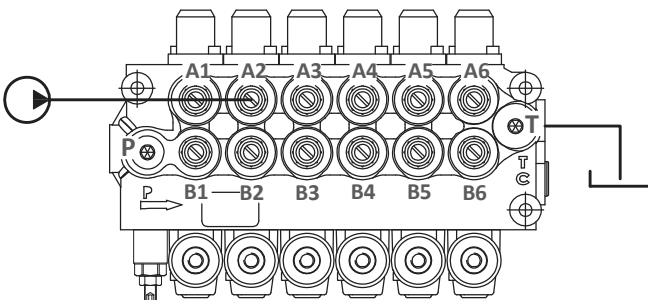
Inlet to work port

From side inlet to A port (spool in position 1) or B port (spool in position 2).



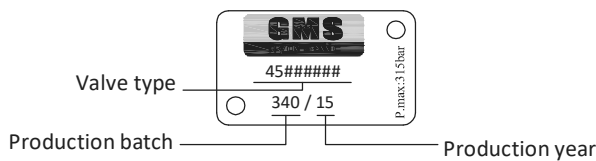
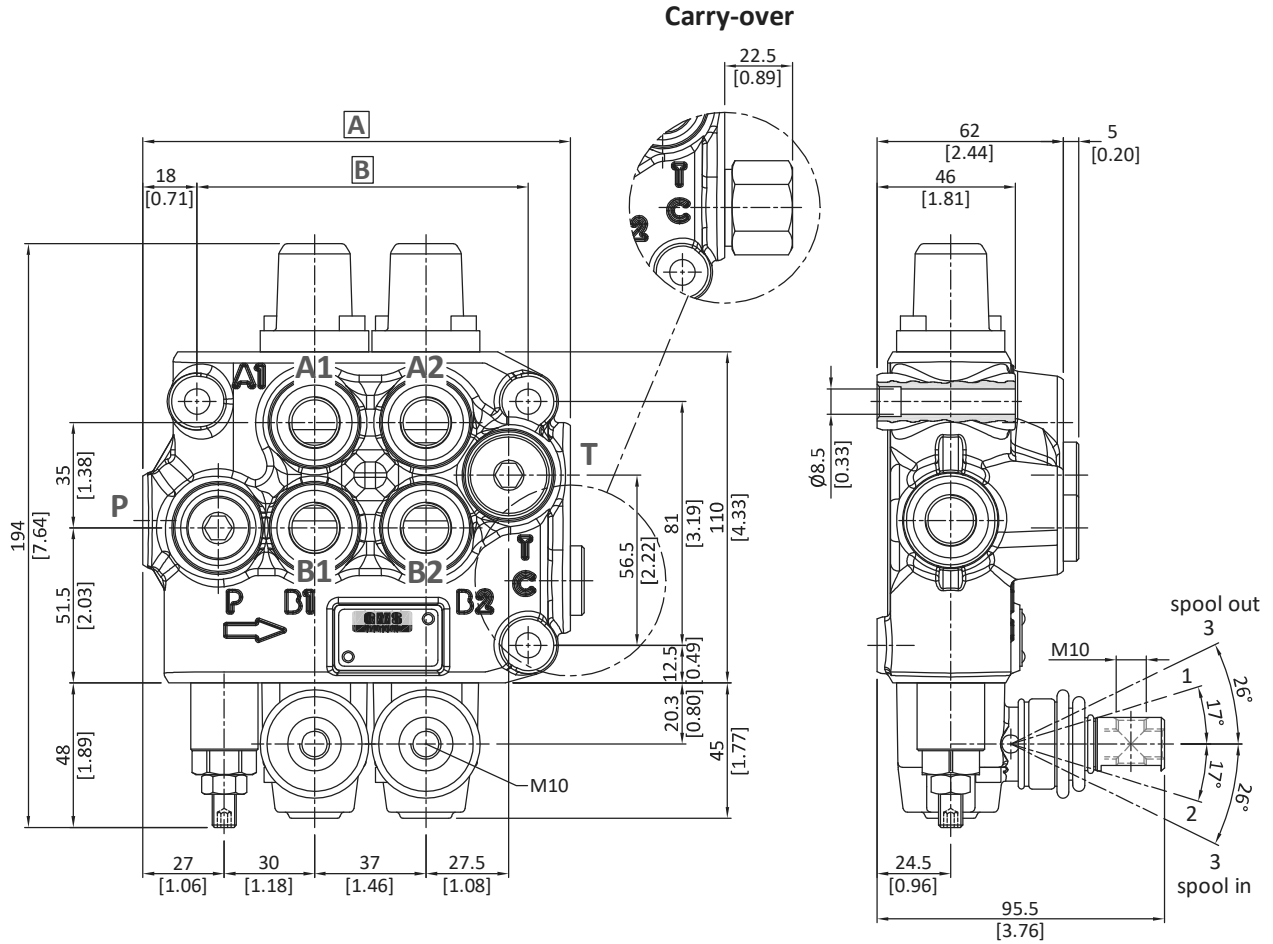
Work port to outlet

From A port (spool in position 2) or B port (spool in position 1) to side outlet.



directional valve with left inlet

Dimensional data (parallel circuit)



TYPE	A		B		Weight	
	mm	in	mm	in	kg	lb
45L GM 08/1-P	105	4.13	73	2.87	3.1	6.83
45L GM 08/2-P	142	5.60	110	4.33	4.4	9.70
45L GM 08/3-P	179	7.05	147	5.79	5.7	12.57

TYPE	A		B		Weight	
	mm	in	mm	in	kg	lb
45L GM 08/4-P	216	8.50	184	7.24	7.2	15.87
45L GM 08/5-P	253	9.96	221	8.70	8.7	19.18
45L GM 08/6-P	290	11.42	258	10.16	10.2	22.49